

"It's out of foam."

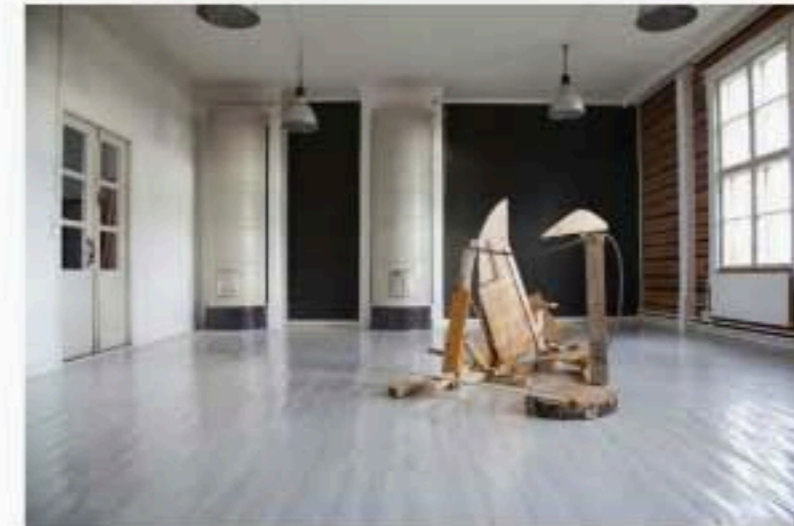


BENTEN CLAY // VERA HOFMANN + SABINE SCHRÜNDER *Germany*

goodnews@bentenclay.com // bentenclay.com // Currently working and living in Berlin, Germany

Benten Clay is an newly founded artistic corporation run by artists Vera Hofmann and Sabine Schründer, with its headquarters in Berlin. Benten Clay explores different aspects of power, investigating socio-political and economical threats as well as environmental concerns using photography, video, installation and

performance. Benten Clay's approach oscillates between slight provocation, research, documentation and poetical discretion. Its methods embrace different roles within a societal system, playing within the ambiguous boundaries between them.



IN THE RESIDENCY

September + October + 1/2 November 2011

////// We founded Benten Clay. We had a lot of creative output. We built a website. We made a portfolio. We agreed on continuing as a team. We will be a network. ////

Benten Clay started to work on the long-term project Age of an End and focussed on the topics of Nuclear Waste and The Mentality of Power. One main focus of its work was the world's first nuclear waste disposal site, located in Olkiluoto (130 km away from Arteles).

Benten Clay's work in Arteles involved a local actor and two neighbours, some wood and junk from the barn, four blue fishes, a machine from the local second hand store and a lot of homemade yellow cake.

[Benten Clay Status Report](#)

www.bentenclay.com/2011/11/14/BentenClay_StatusReport.pdf